

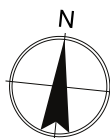
## Golden Eagle Nest Site Model

Predicted Relative Nest Site Density (RND)

Northwestern Plains

0 55 110 220 Miles

0 80 160 320 Kilometers



— State Boundaries

— Highways

— Major Rivers

— Waterbodies

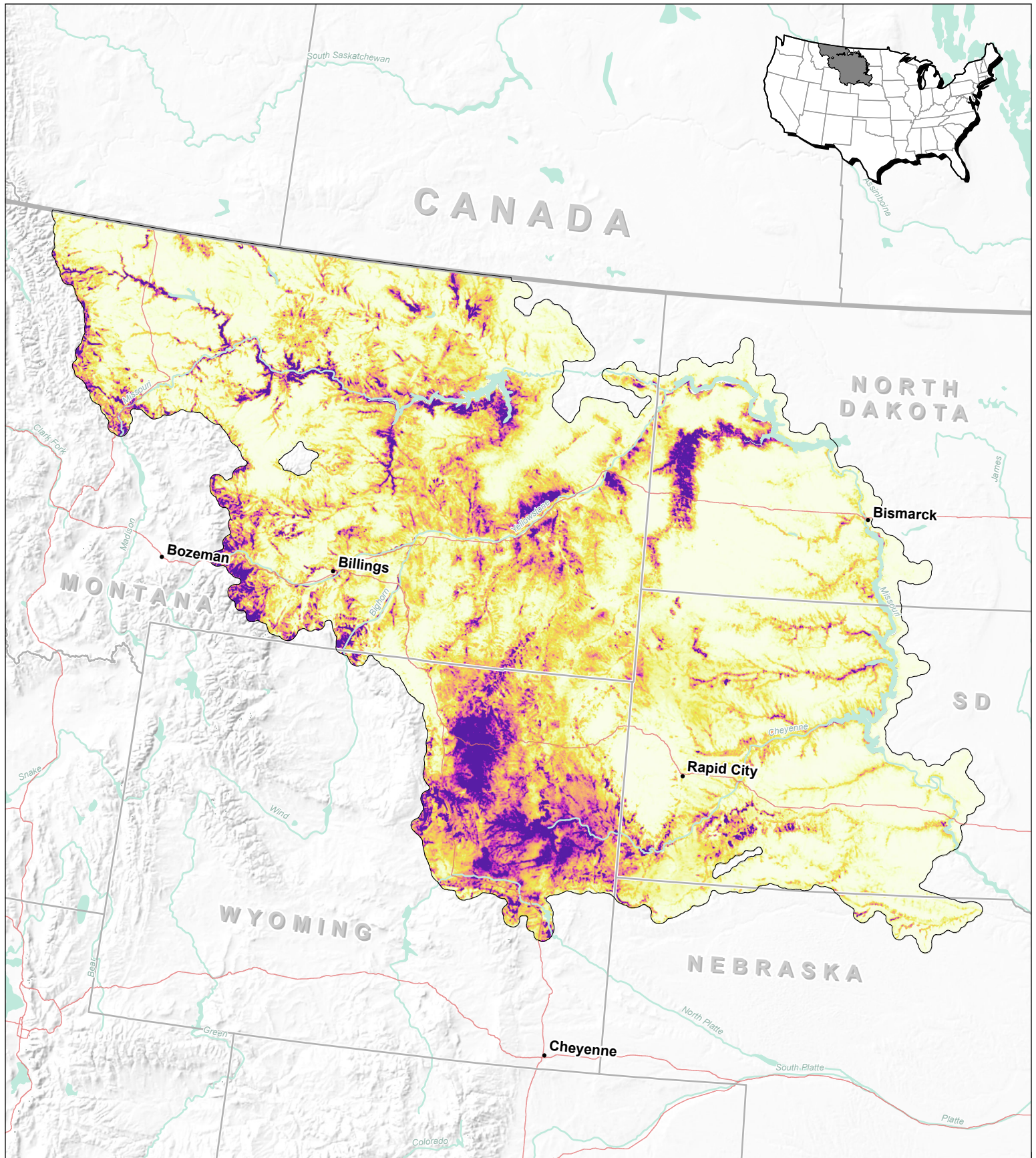
RND

High

Low

Produced by the U.S. Fish and Wildlife Service,  
Migratory Bird Program, Lakewood, CO (August 2019)





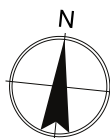
## Golden Eagle Nest Site Model

Predicted Area-adjusted Frequency (AAF) of Nest Sites

Northwestern Plains

0 55 110 220 Miles

0 80 160 320 Kilometers



— State Boundaries

— Highways

Waterbodies

Major Rivers

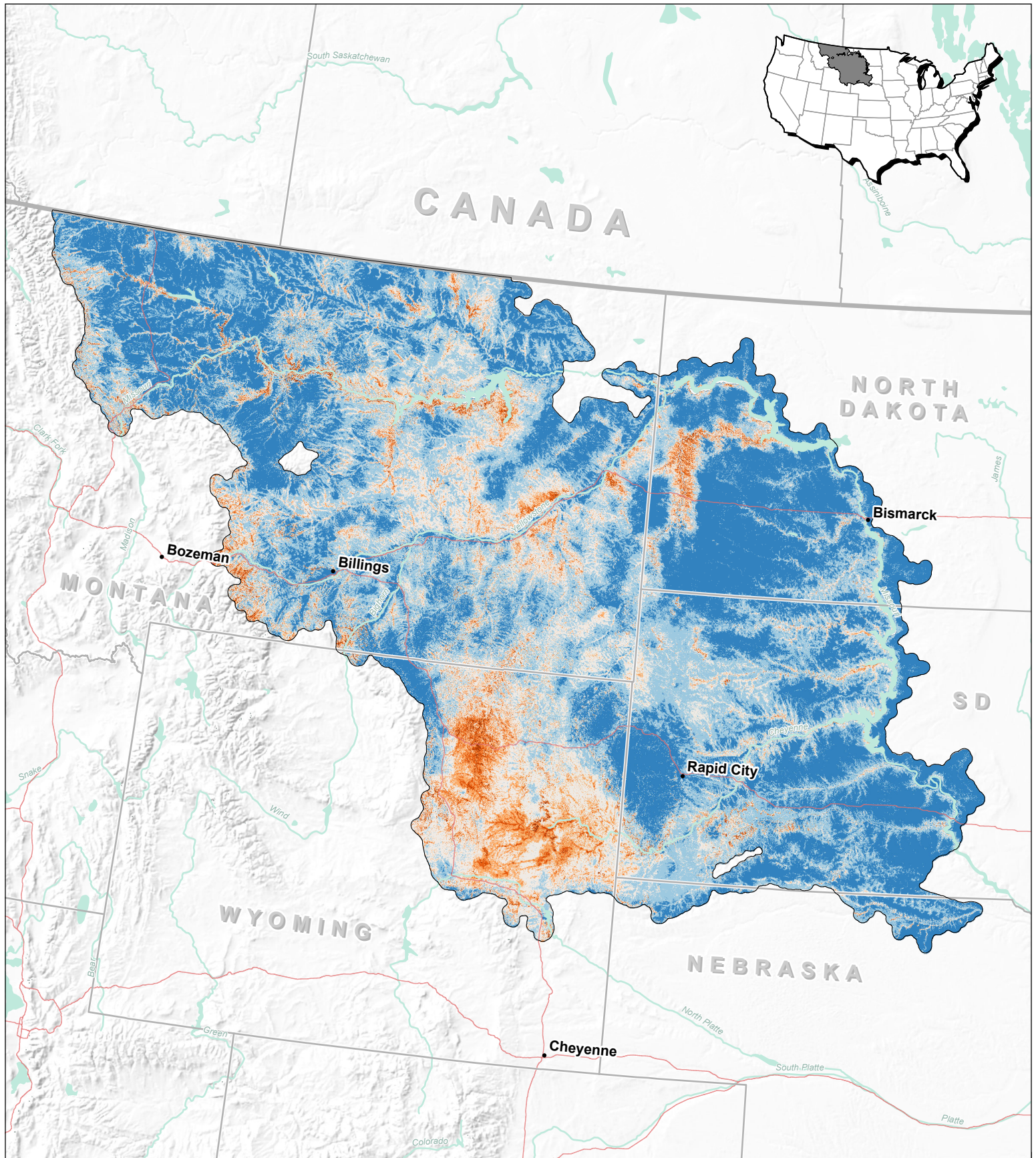
AAF (Smoothed)

High

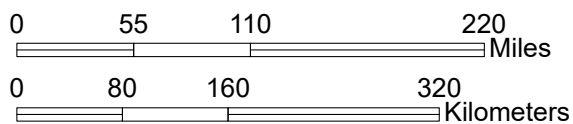
Low

Produced by the U.S. Fish and Wildlife Service,  
Migratory Bird Program, Lakewood, CO (August 2019)





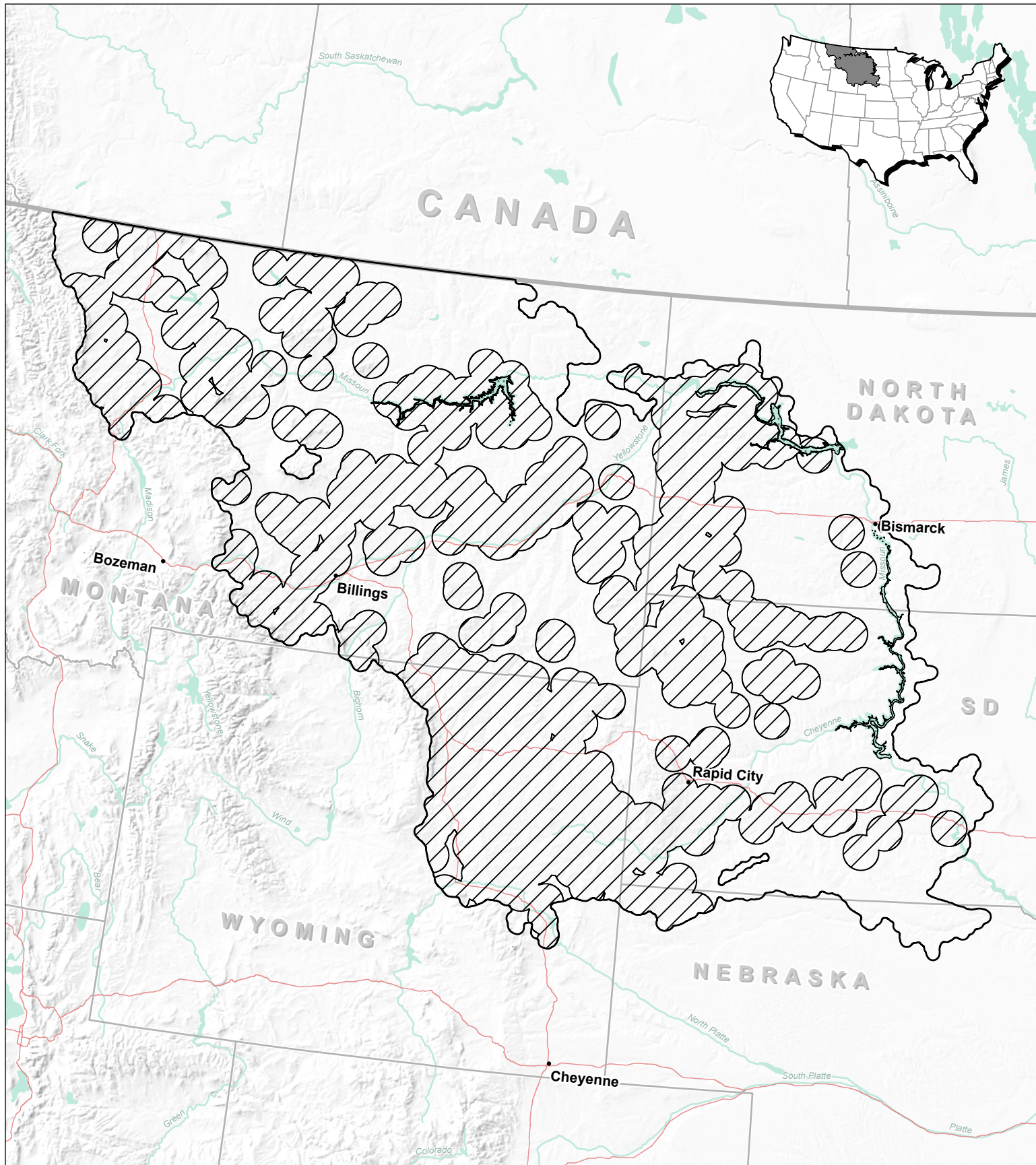
**Golden Eagle Nest Site Model**  
**Predicted AAF of Nest Sites (Classified)**  
**Northwestern Plains**



- |                    |               |              |
|--------------------|---------------|--------------|
| — State Boundaries | AAF Classes   | neutral      |
| — Highways         | very high     | moderate low |
| — Waterbodies      | high          | low          |
| — Major Rivers     | moderate high | very low     |

Produced by the U.S. Fish and Wildlife Service,  
 Migratory Bird Program, Lakewood, CO (August 2019)





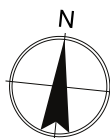
## Golden Eagle Nest Site Model

### Model Region and Modeling Areas

#### Northwestern Plains

0 55 110 220 Miles

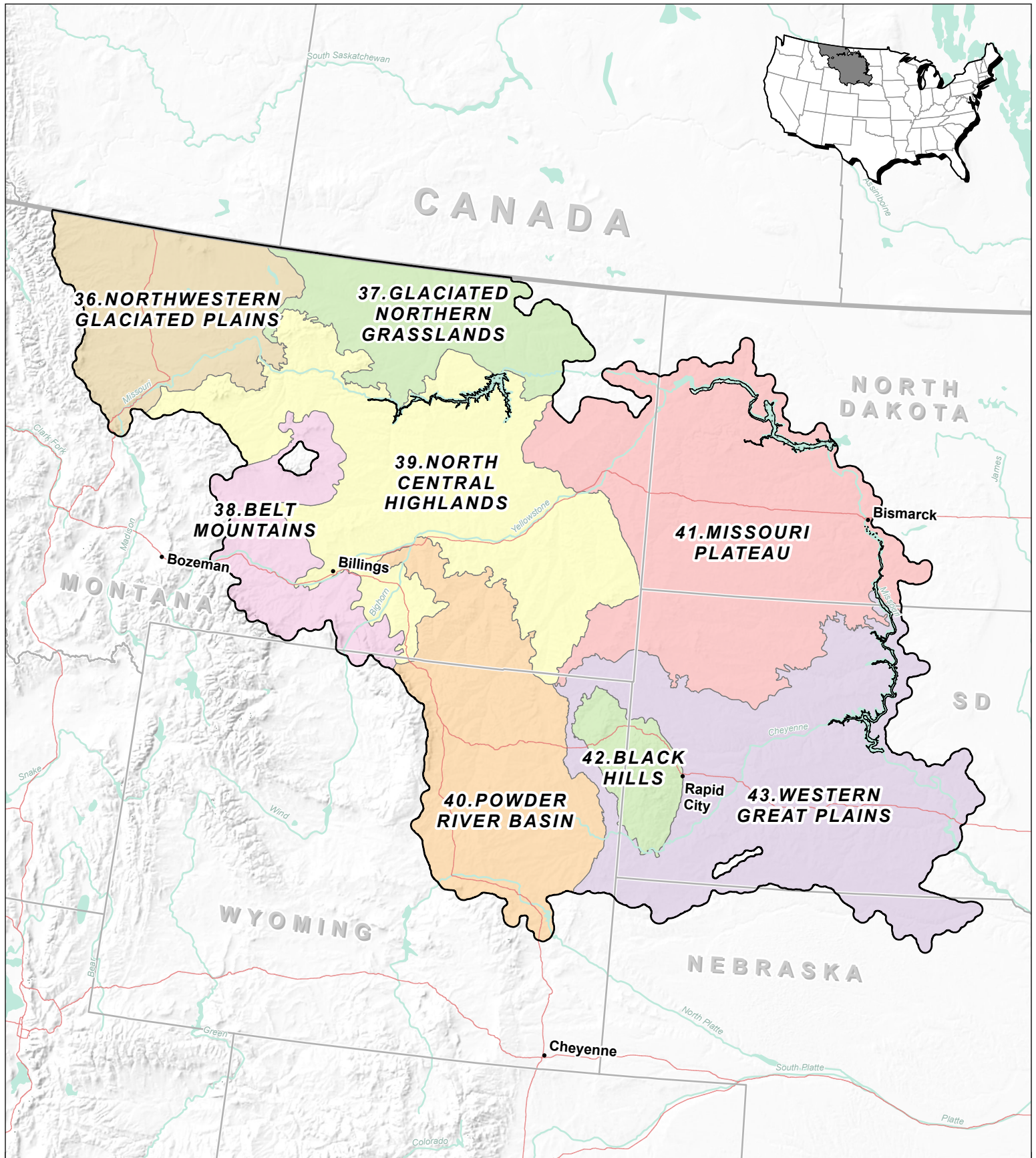
0 80 160 320 Kilometers



- State Boundaries
- Highways
- Major Rivers
- Waterbodies
- Model Region
- ▨ Modeling Area
- ▤ Non-habitat Area

Produced by the U.S. Fish and Wildlife Service,  
Migratory Bird Program, Lakewood, CO (August 2019)





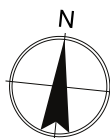
## Golden Eagle Nest Site Model

### Model Subregions

#### Northwestern Plains

0 55 110 220 Miles

0 80 160 320 Kilometers



— State Boundaries

— Highways

— Major Rivers

— Waterbodies

□ Model Region

□ Model Subregion

▤ Non-habitat Area

Produced by the U.S. Fish and Wildlife Service,  
Migratory Bird Program, Lakewood, CO (August 2019)